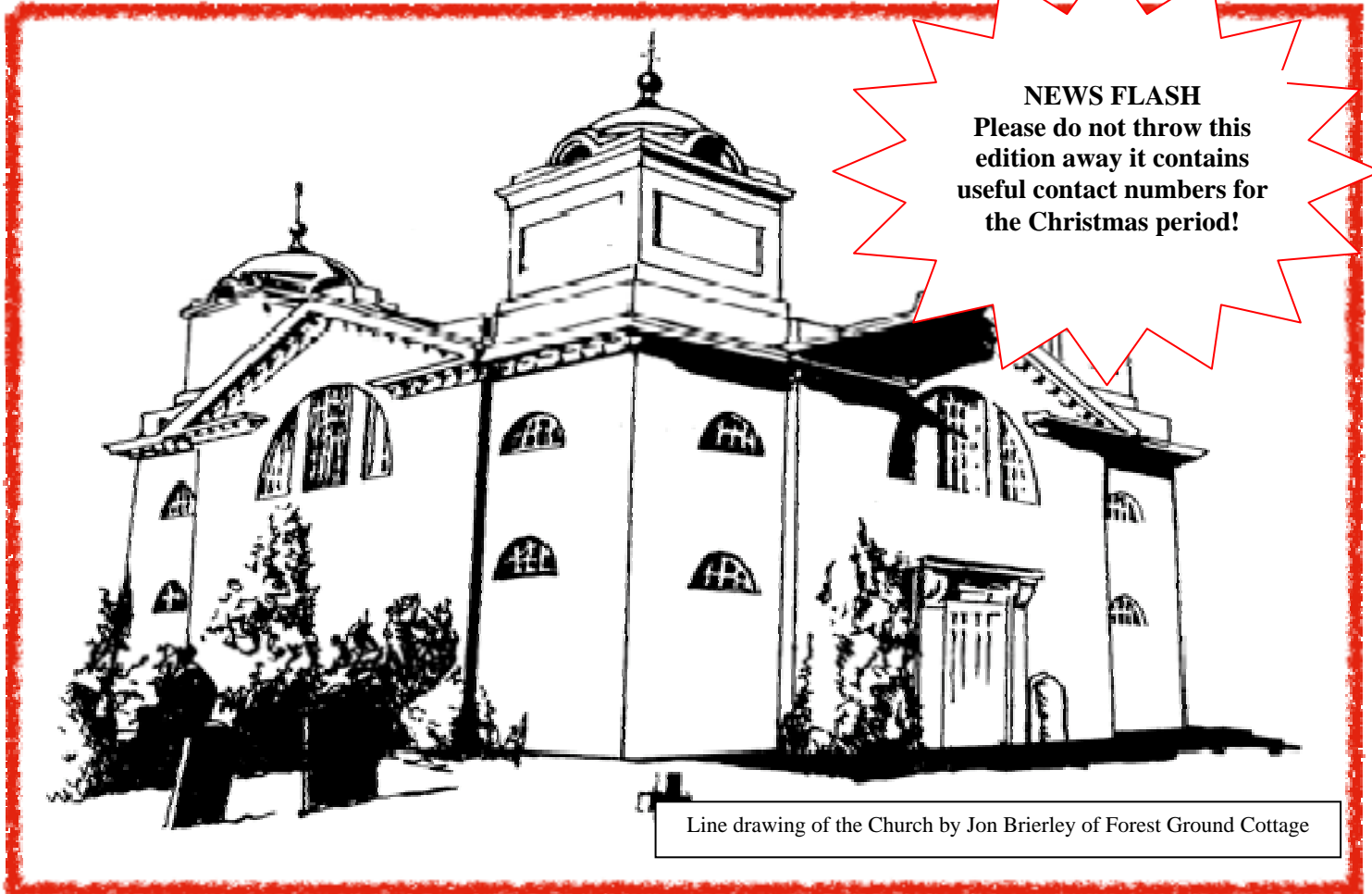




# Packington Newsletter

Issue 47

December 2011



**NEWS FLASH**  
Please do not throw this edition away it contains useful contact numbers for the Christmas period!

Line drawing of the Church by Jon Brierley of Forest Ground Cottage

## Dates for Your Diary – For Church Services see next page

Sunday December 11 <sup>th</sup>	Candlelight Christmas Concert	3 p.m. – St. James Church
Wednesday December 14 <sup>th</sup>	W.I Members Meeting	7.30 p.m. – Undercroft
Saturday December 17 <sup>th</sup>	Carol Service	6.30 p.m. St. James Church
Friday December 23 <sup>rd</sup>	Christmas Party	7.30 p.m. Undercroft
Friday December 30 <sup>th</sup>	Social Club	Undercroft
Wednesday January 11 <sup>th</sup>	The Life of Queen Charlotte	7.30 p.m. Undercroft
Friday January 27 <sup>th</sup>	Scottish Evening	7.30 p.m. Undercroft
Wednesday February 8 <sup>th</sup>	The Ifakara Bakery Project	7.30 p.m. Undercroft
Wednesday April 11 <sup>th</sup>	Canal Boat Women	7.30 p.m. Undercroft
Thursday June 28 <sup>th</sup>	Cream Tea	2.30 p.m. Packington Hall
Sunday July 1 <sup>st</sup>	NGS Garden Opening	2.30 p.m. Packington Hall
Sunday October 7 <sup>th</sup>	Harvest Festival	10.30 a.m. St. James Church
Thursday October 11 <sup>th</sup> (TBC)	Harvest Supper	7 p.m. Packington Hall
Thursday November 15 <sup>th</sup>	The Coffee Morning	10.30 a.m. Packington Hall
Saturday December 15 <sup>th</sup>	Carol Service	6.30 p.m. St. James Church

**THE ESTATE CHAPEL OF ST. JAMES  
GREAT PACKINGTON, MERIDEN  
WARWICKSHIRE**

**THE PRIVATE CHAPEL ADMINISTERED BY THE TRUSTEES  
FROM 1ST APRIL 1994  
SUNDAY SERVICES AND ALL OTHER USES BY PERMISSION  
ENQUIRIES TO LORD AYLESFORD**

**CHURCH NEWS**

**SERVICES FOR 2011/12**

December 4 <sup>th</sup>	Advent 11	Holy Communion
December 17 <sup>th</sup>	Carol Service	6.30pm
December 25 <sup>th</sup>	Christmas Day	Family Communion
January 8 <sup>th</sup>	Epiphany 1 Plough Sunday	Holy Communion
February 5 <sup>th</sup>	Septuagesima	Holy Communion
March 4 <sup>th</sup>	Lent 11 The Litany	Holy Communion
April 8 <sup>th</sup>	Easter day	Holy Communion
May 6 <sup>th</sup>	Easter IV	Holy Communion

**Lend a Flower Rota!**

We have set up a rota to do flowers for the once a month service. If it is your turn, please take them home after the service to enjoy them, otherwise they would be wasted!

If you cannot do the month allocated please let me know:

Lady Aylesford.....01676 522274

**We really need more volunteers for the flower rota so that everyone need only do it once a year?!**

December 4 <sup>th</sup>	Mrs. Sach
January 8 <sup>th</sup>	Mrs. Jolly
February 5 <sup>th</sup>	Mrs Garnet
March 4 <sup>th</sup>	Mrs Dalton
April 8 <sup>th</sup>	Lady Aylesford
May 6 <sup>th</sup>	Mrs Smith

*Lady Aylesford will do all Flowers and the Tree for Christmas/Easter*

Packington Hall, Meriden Nr Coventry CV7 7HF  
Tel: Estate Office - 01676 522020 Fax: 01676 523399  
E-mail..... pg@packingtonhall.com

## Mobile Library dates

The mobile library will call at The Hall at 10.15am and at Dairy Farm at 10.40 am on the following dates:

### 2011

6<sup>th</sup> December

### 2012

January 3<sup>rd</sup> and 24<sup>th</sup>

April 17<sup>th</sup>

July 10<sup>th</sup> and 31<sup>st</sup>

October 2<sup>nd</sup> and 23<sup>rd</sup>

February 14<sup>th</sup>

May 8<sup>th</sup> and 29<sup>th</sup>

August 21<sup>st</sup>

November 13<sup>th</sup>

March 6<sup>th</sup> and 27<sup>th</sup>

June 19<sup>th</sup>

September 11<sup>th</sup>

December 4<sup>th</sup>

## Important Dates for the Diary for the Year to come (see front sheet for further dates)

June 28 <sup>th</sup>	Cream Tea
July 1 <sup>st</sup>	NGS Garden Opening
October 7 <sup>th</sup>	Harvest Festival
October 11 <sup>th</sup> (provisional)	Harvest Supper
November 15 <sup>th</sup>	The Coffee Morning
December 15 <sup>th</sup>	The Carol Service

Thank you for everyone who has supported these events this year and I hope we will see even more of you next year!

### Harvest Supper

This was a wonderful evening with, eventually, a great turn out! The Estate put on excellent entertainment which was very well received. Our thanks go out to all of you that produced Apple Pies and also for the delicious casseroles. Thank you also to the Beaty family for the baked potatoes. As always, the team at the Hall set it all up, so many thanks to them as well.

The Grand total was £708.00

Can we please ask that you put the 2012 date in your diary now! (to be found on front page of this newsletter and above!!), and when the form appears in the August newsletter, please get you tickets straight away. It takes a lot of time to chase people for their tickets, thank you!

## Engagement!

The engagement is announced between Lord James Guernsey, son of The Earl and Countess of Aylesford of Packington Hall, and Miss Georgina Harker, Daughter of Mr and Mrs Simon Harker of Leicestershire. The Wedding will take place in the Summer in Leicestershire.

## Christening

The Christening of Jake Heneage Charles Haynes took place on Sunday 27<sup>th</sup> November. We were sad not to have been able to have it on a 'normal' Sunday so that he could have been fully welcomed into the Church, but we just couldn't get all the family members together. John gave us a lovely service and Peter played the organ for us and it was a very happy service and Jake grinned throughout!!!



Would anyone be interested if we could organize some Zoomba classes in the Undercroft? We think that these could be sorted for early evening, once or twice a week. If anyone is interested, please ring Ali on 07805 415106 and if we get a good response we will get it sorted.

## BE EXTRA VIGILANT!

A woman visited the toilet in John Lewis @ Blue Water and hung her handbag on the back of the toilet door. As she carried on about her business, a hand suddenly appeared over the top of the stall and grabbed her bag clean off the hook!!!

She immediately reported the incident to the head of security, who in turn informed the manager of the store. A couple of days later she had a call from the head of security to say her bag had been found without her purse. So she arranged a convenient time to go and meet the manager to collect her things.

On arriving at the John Lewis store at the agreed time, the manager was not expecting her & neither was the head of security. No one from the store had actually called her as the bag had still not been found.

When the lady got home, her house had been burgled with no sign of forced entry. The Police believe the robbers had used her Driving License for the address and her keys to let themselves in!

This is real - it isn't just a scaremongering story. Many will be so shocked at how complex bag snatching crime has become.

Please be extra vigilant ladies AND gents (with your man bags) there are a lot of desperate criminals out there!

## A note from Ellen Beaty:

Lady Aylesford

I have had a super response from the Packington residents but not spent much time on the Estate - will try harder, but Arley, Ansley Common and Coleshill generate more work.

I'm going to have to train everyone not to call the family (even nephews and nieces) to report crime - the locals must think all The Beaty's are Specials or something and certainly trust them with all sorts of information.

Hope my report is OK  
Ellen

## The Coffee Morning - November 17<sup>th</sup>

The Coffee morning was again held in the Pompeian Room this year. Thank you for all the wonderful help from Valma Grant, Ann Beaty, Ros Smith, Chris Evans, Cynthia Champion, Janet Nesbit, Carol and David Garnet, Liz Litherland and Sally Harben and of course the unseen hero, Harry Grant who does all the washing up!!! Also, not to be forgotten, my House team who set it all up for everyone so that it is all just ready to go! The total to go to the Church fund was £1,142.65! - a really fantastic result. Thank you to everyone that came and supported us. I am not sure that we will have another Coffee morning where lots of you were out enjoying the sun on the terrace!!

### Account:

Raffle.....	£	270.00
Bric a Brac.....	£	167.65
Cakes.....	£	176.50
Door.....	£	403.50
Heather (cards).....	£	15.00
Donations.....	£	<u>110.00</u>
<b>Total.....</b>	<b>£</b>	<b>.£1,142.65</b>

## In Memoriam

### **IRENE GLEDHILL BALL**

7 August 1921-11 October 2011

Those on the Estate who worship at the Estate Chapel of St James will remember fondly Elizabeth Sach's Mother, who attended regularly with Elizabeth and Keith over the last 16 years. After her death, the following poem was found, tucked away in her purse, carefully preserved there for many a long year. Her grand-daughter Kate read it at her Funeral, which was conducted by the Rev'd John Bradford.

I hope that my children, looking back on today,  
Remember a Mother who had time to play.  
Children grow up while you're not looking;  
There will be years yet for cleaning and cooking.  
So, quiet now cobwebs; dust go to sleep.  
I'm rocking my baby, and babies don't keep.

[Anon]

## Erratum: August 2011 Newsletter

In the August 2011 Newsletter, the incorrect figures were included for the Cream Tea held on the 30<sup>th</sup> June 2011... The correct account is shown below

	Income	£
<b>Received</b>	Door Sales	318.50
	Donations	20.00
	Raffle	165.50
	Sale of Scones	70.50
	<b>Total:</b>	<b>574.50</b>
<b>Debit</b>	Clotted Cream – 16 tubs @ £1.99	31.84
	Strawberry Jam – 12lbs @ 0.81	9.72
	Butter – 4lbs @ £3	12.00
	Orange Squash – 1 litres	3.49
	Milk – 3 litres	3.30
	Tea bags	3.00
	Sugar – 2lbs	1.00
	Napkins – 200	5.38
	<b>Total:</b>	<b>69.73</b>
		<b>£504.77</b>

# NEWS FROM THE ESTATE OFFICE

## CHRISTMAS BREAK

The Estate Office will be closed for the Christmas break on the following days:

From mid-day on Friday 23<sup>rd</sup> December and will re-open on Wednesday 28<sup>th</sup> December 2011. For the New Year, we will close at mid-day on Friday 30<sup>th</sup> December and re-open for normal business on Tuesday 3<sup>rd</sup> January 2012.

If you are a Packington Estate Tenant and have a genuine emergency, you may call the following people. Please remember, to only call these people in a **genuine emergency**:

General Estate Emergencies:	Stuart Jennings	01676 521017 / 07961 955163
Electrical Emergencies:	Steve Gilkes	0121 608 7536 / 07980 726993
Plumbing Emergencies:	Chris Smythe	07815 196862
Plumbing Emergencies:	Jim Lacey	07730 312219

## Marsh Lane Nature Reserve

For daily bird records  
(and other Estate details),  
please visit:

[www.packingtonestate.net](http://www.packingtonestate.net)

## CHRISTMAS CARDS

As last year, the Estate will not be sending Christmas cards but, instead, donating the money that would have been spent to the Fen End Group of Riding For The Disabled. Providing funding direct enables the group to provide more riding lessons for the disabled children in the area, and we hope you agree that this is a good cause.

The Estate wish everyone a very happy  
Christmas and New Year.

If anyone wishes to make a donation please contact  
Lady Aylesford.

## Parish Newsletter

For anyone with access to  
the internet you can  
download a copy of this  
Newsletter and subsequent  
Newsletters at

[www.packingtonestate.net](http://www.packingtonestate.net)

Simply choose the "St. James  
Church" icon at the top of the  
page and you will find a link  
under General Information.



The logo for Packington Estate Social Club is a dark green banner with a white border. The text "Packington Estate Social Club" is written in a white serif font, centered on the banner.

# Packington Estate Social Club

## Your social club

Your social club has been doing very well this year. We have hosted numerous events including recently our famous fish and chip supper and Quiz night which is always a great favourite. We also had some good fun rehearsing for the Harvest Supper which we hope you all enjoyed.

We have raised lots of dosh and given lots away to various charities.

With Christmas coming we will be holding our traditional **Christmas Party** but this time with a difference. We will be serving hot mulled wine and mince pies on 23<sup>rd</sup> December, so get yourself down to the Undercroft anytime after 7.30pm to enjoy the festivities. Don't forget to bring the family too, the more the merrier.

We are having a social night on 30<sup>th</sup> December and everyone is welcome, you can practice your drinking ready for New Year's Eve!

Into the New Year we will be having a **Scottish evening** on 27<sup>th</sup> January with our usual haggis, yorkshires, faggots and peas. The evening will have a Scottish theme and we are hoping to have a themed quiz on that night too.

Remember - each time you buy a drink (at very competitive prices I might add) or purchase a ticket to attend an event, your money is being saved and used to help others.

If you know of a well deserving cause just let us know and we will happily consider your request.

### ***Committee Members***

Paul Brown (Chairman)  
Steve Allcock (Vice chairman)  
Cherie Faries (Secretary)  
Ros Smith (Treasurer)  
Kim Gardner (Ass. Treasurer)  
Mick Gardner :  
Maryanne Beaty (Ass. Treasurer)



Packington Estate  
Social Club

Invite you to their

*CHRISTMAS  
CELEBRATION*

FRIDAY 23<sup>rd</sup> DECEMBER

7.30pm onwards

Mulled wine and Mince Pies

In the Undercroft, Packington Hall

# Packington and Maxstoke NEWS



December 2011

---

## IN OCTOBER ...

- # We enjoyed a talk and demonstration on silk painting.  
On the following Saturday, nearly all our members were treated to a **SILK PAINTING DAY** at which we made scarves and jewellery, courtesy of a bursary from Denman Hall (the WI College). It was a great success!

## COMING MEETINGS ...

Why not join us at 7.30pm in the Undercroft at Packington Hall for our December Members' Evening or for one of our Spring meetings ... new members are made very welcome.

Please telephone Elizabeth Sach (see below) if you need a lift.

- # Wednesday 14 December: **Members' Evening**
- # Wednesday 11 January: **“The Life of Queen Charlotte”**  
Javad Hashami
- # Wednesday 8 February: **The Ifakara Bakery Project**  
Eugene Schellenberg
- # Wednesday 11 April: **Canal Boat Women**  
Mike Miles

**Contacts:** President Loraine Jones.....01676 - 540693  
Secretary Elizabeth Sach..... 01676 - 523222  
Treasurer Kate Beaty.....01675 - 443623

**SUNDAY 11 DECEMBER, 3PM**  
**CANDLELIGHT**  
**CHRISTMAS CONCERT**



Baroque string concertos by  
Bach, Vivaldi, Locatelli and Valentini  
performed by

**The Musical & Amicable Society**

**TICKETS £13, £11 (STUDENTS £5)**

**TICKETS AVAILABLE ONLINE:**

**[WWW.AMICABLES.CO.UK](http://WWW.AMICABLES.CO.UK)**

**OR 01675 481814**

**MULLED WINE & MINCE PIES**

in aid of Acorns Childrens Hospice

**ST JAMES' CHURCH**  
**PACKINGTON, NR. MERIDEN**

## Policing Update – November 2011

The Police Station at Coleshill is closed to the public now but a few of us still work from the premises. Should you need the front office services please go to Warwickshire Direct – The Library in Coleshill and they will be able to help.

**101** – To call your local Police there is now a national number 101. In case of emergency still call 999. The advantages of 101 are that you do not need to remember any local phone numbers. On calling you will automatically be put through to the nearest Police Force and then have the option to be transferred to surrounding Forces. If you need a Force not adjacent to Warwickshire then call in the normal manner. Calls cost 15p per call from both mobiles and landline no matter what time of day or length of call. If you are deaf, hard of hearing or speech impaired you can textphone 18001 101. I have tried this from both landline and mobile, it works.

Special Constable John Reeves has been active in the area and you may get to meet him. We are currently working to ensure more Specials are independent – that is able to work by themselves to support our work in the community.

I have spent a number of Sunday afternoons along Maxstoke Lane but not yet encountered those motorcyclists causing a problem. This will be something I will come back to in the Spring. Please call the Police should you witness those speeding or driving in a dangerous manner

The Estate but not all the farmers have now been signed up to Farm/Rural Watch this has yet to be completed. There is a national problem with theft of cabling, lead and scrap. It is important all incidents are reported. What may seem insignificant to you may be the first or last piece of our jig saw.

You as local residents know what is normal in your locality, **if you think something is suspicious it is suspicious**, please let us know about it.

Finally I have been contacted by a number of Packington residents, given advice and been pleased to help problem solve. If you want to report a crime/incident call **101**, to report an emergency call **999** for matters that may be of local interest or for general advice I can be contacted via **101** my Warwickshire extension is 3559 and finally e mail is [ellen.beaty@warwickshire.pnn.police.uk](mailto:ellen.beaty@warwickshire.pnn.police.uk)

The family won't give you my mobile number – I may be on the allotment or at WI!!!!

WPC 86 Ellen Beaty  
Beat Manager  
North Warwickshire South

# 101 is now the number to call when you want to contact your local police – when it's less urgent than 999

**My car has been stolen**

**My property has been vandalised**

**I want to talk to someone about a crime**

**I suspect someone is selling stolen goods**

**I suspect drug dealing in my neighbourhood**

**My phone has been stolen and I need a crime number**

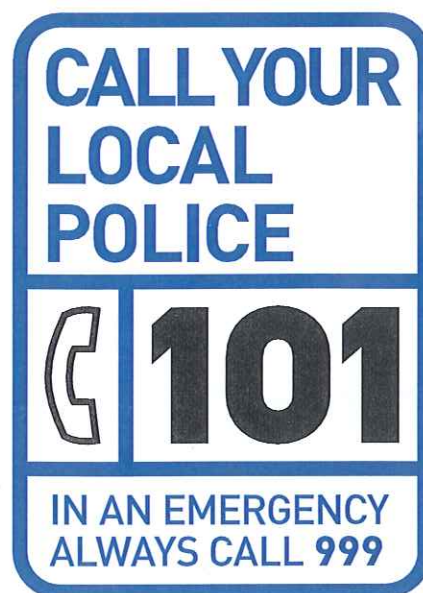
**[www.police.uk/101](http://www.police.uk/101)**

Calls from landlines and mobile networks cost 15 pence per call, no matter what time of day or how long your call.

If you are deaf, hard of hearing or speech impaired you can textphone 18001 101

101 is available 24 hours a day.

Crown Copyright June 2011



# **BEWARE OF TELEPHONE SCAMMERS SELLING ADVERTISING IN A POLICE PUBLICATION**

Many of you may remember that last year many farms and rural businesses across Warwickshire were contacted by callers, with a Liverpool accent, who said that they were selling advertising space on behalf of PCSO's in a Police approved publication.

On 2<sup>nd</sup> September, an elderly lady at a farm premises in Rugby received a phone call from a withheld number and the caller stated that he was from the Police Authority and was contacting all farm in the area to ask for their support on a Community Policing issue.

The caller talked at length and confused the lady as to what she was being asked to support. During the conversation she was asked if her name could be used as showing support for the cause and she was also asked to confirm her name, address and the company name of the farm. The lady volunteered information that she was elderly and lives alone.

The caller then asked for a sum of money, approximately £250 for possibly a small sign. The lady told the caller that she had no money and the called ended the conversation.

These scammers go though the country, county by county, and contact people from names on lists that they have purchased. They operate only on the telephone and by post and do not visit premises.

If you get a similar type of call, please could you engage the caller in conversation, whilst remaining suspicious, and try to gain information. If you are able to get a company name, email address or contact number, please reply to this message and I will pass on the information to the Warwickshire Police officer in charge and also to Trading Standards.

Last year very valuable information was gained by Rural Watch members who kept information and documentation.

Thank you.

Julie Dale

Watch Co-ordinator

Community Protection



Was your child born between  
1 September 2007  
and 31 August 2008?

They are due to start  
school in September 2012

You can apply for a school place  
on-line from 4 July 2011

[www.warwickshire.gov.uk/admissions](http://www.warwickshire.gov.uk/admissions)

The closing date for  
on-time applications is  
**16 January 2012**

Text **STARTSCHOOL** to **07950 081 082**  
for a text message reminder on how to apply



## I LOVE MUSIC BUT PREFER TO LISTEN

Great! Come along and listen for as long as you like. But beware, once it gets a hold of you it will be difficult to prevent yourself joining in.

## IN THAT CASE I'D LOVE TO COME AND SING BARBERSHOP WITH YOU

Please tell me how, when and where

NAME: .....

ADDRESS: .....

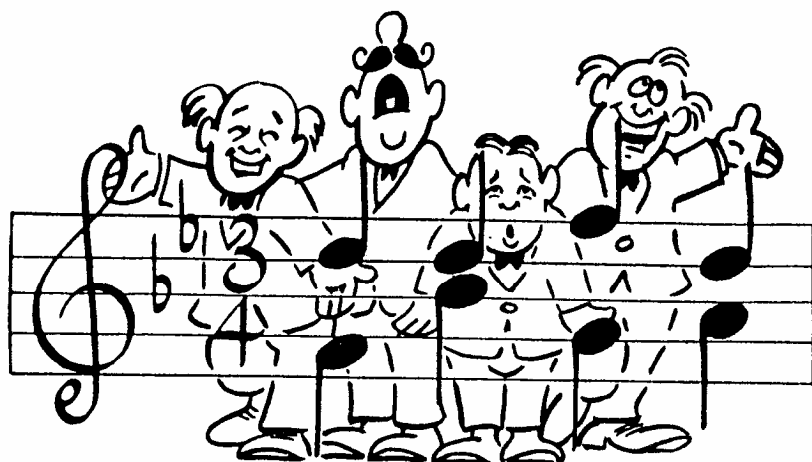
.....

TELEPHONE: .....

Jack Tuckley  
4 Morland Close  
Bulkington  
Nr Bedworth CV12 9JY

or

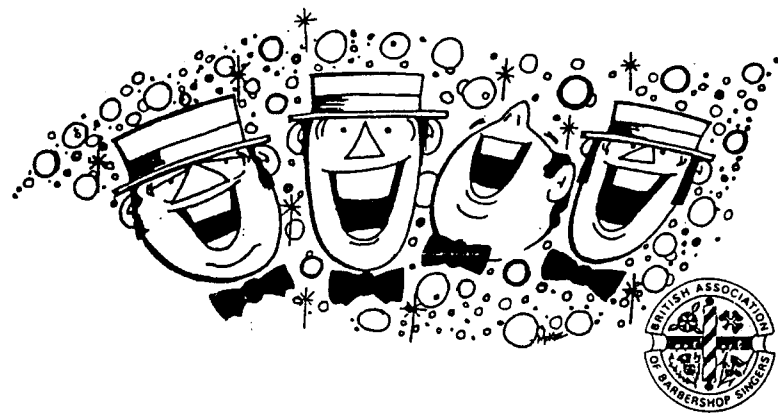
Telephone  
(024) 7767 4790  
or email  
jack.tuckley@talktalk.net



*BEHIND the BARS*

# WANTED!!

## MEN WHO LIKE TO SING!



## COVENTRY BARBERSHOP HARMONY CLUB

Members of Coventry Barbershop Harmony Club, formed in 1983 perform as Sound of Three Spires and the all male chorus consists of men of all ages and from all walks of life, drawn together by the sheer joy of singing. Doctor; labourer; architect; civil servant; painter; company director; shop keeper; sales manager; school teacher . . .

Your questions answered:

### WHAT IS BARBERSHOP SINGING?

Barbershop harmony is an exciting style of unaccompanied singing which builds "natural" harmonies around a melody. There are four voice parts – the Leads sing the melody and the harmony parts are provided by Tenors (above the melody) the Baritones and Bases. Most of the songs were written in the period 1890 to 1930 when the melodies were particularly suitable for natural harmonising.

*We do not wear boaters or carry towels over our arms!*

## WHAT IF MY VOICE ISN'T GOOD ENOUGH?



That's very unlikely; few of our present Chorus would call themselves particularly good singers. If you can sing a note on pitch and hold a simple tune that's all you need to do. The rest is simply a matter of practise and a willingness to learn.

## WHAT PART DO I SING?

The Musical Director will suggest the part best suited to your voice and experience, and can often do this from merely listening to you speak. During the first few weeks he will ensure that you are comfortable in that part or move you to one that is more suitable to your vocal range and ability.



### Some Misconceived Ideas:

#### I CAN'T READ MUSIC!

No problem; very few of our members can.

We have learning techniques which will help you to overcome that. These include practice in small sections and, where possible, the provision of "teach-tapes" for you to listen to at home.

## I'M TOO OLD (OR TOO YOUNG) FOR THIS!

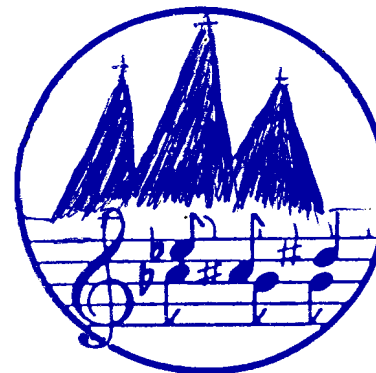


"WHO CARES WHAT HE LOOKS LIKE, AS LONG AS HE CAN SING TENOR!"

Rubbish. If your voice has broken and you have harmony in your soul then this is the hobby for you.

## IT'S PROBABLY EXPENSIVE

Not true. Our subscriptions are currently £3.50 per week and that is friendship and enjoyment at rock bottom prices compared to other sports and hobbies.



**SOUND OF  
THREE SPIRES**



# Coventry Pilgrimage

## 26<sup>th</sup> March to 1<sup>st</sup> April 2012

### Letter to all churches in Coventry Diocese

November 2011

Dear Clergy,

We are writing to you on behalf of the planning group for a Coventry Pilgrimage to be held in the week beginning March 26<sup>th</sup> 2012 and culminating in a pilgrim service in Coventry Cathedral on the evening of Palm Sunday April 1<sup>st</sup> 2012. The small planning group is led by the Revd Robin Trew, Rector of Allesley, and has the support of our Bishops and Cathedral and Area Deans.

The proposal for a pilgrimage has arisen from Robin Trew's experience of leading diocesan pilgrimages on the Camino de Santiago, from the recognition of Coventry Cathedral as an international centre of pilgrimage by the worldwide Community of the Cross of Nails, from the experience of a local group associated with the Northumbria Community of prayer walking along the River Sherbourne and parts of the Coventry Way, and from the inspiring story, told in Stephen Verney's *Fire in Coventry*, of the Cross of Nails 40-day pilgrimage around the Diocese before the consecration of Coventry's new Cathedral on 25<sup>th</sup> May 1962.

The proposal for 2012, the Jubilee year of Coventry Cathedral, is to follow the route of the 40-mile way-marked circular footpath, the Coventry Way, by walking from Meriden to Berkswell, Burton Green, Kenilworth, Stoneleigh, Bubbenhall, Ryton-on-Dunsmore, Wolston, Brinklow, Ansty, Bedworth and Fillongley, then to walk down the route of the River Sherbourne via Allesley to the Cathedral. We hope that Christians from many different churches and denominations will join together to walk and pray for the city and the surrounding towns and villages.

A week event will cover the route with walks of 4 ½ to 6 ½ miles on weekday evenings between 5pm and 8pm from Monday 26<sup>th</sup> March followed by day walks on Saturday and Sunday, with pilgrims returning home each night. A weekend event for experienced walkers, youth groups etc. will cover the route with long walks from Friday evening to Sunday, pilgrims being accommodated in Kenilworth and Bedworth en route. A pilgrim service will be held each evening in a church on the route.

Additionally, there will be a route planned from the south of the Diocese which could be walked to link up with the Coventry Way.

#### Week Event

<b>Monday</b>	Meriden via Berkswell to <i>Burton Green</i>
<b>Tuesday</b>	Burton Green to <i>Stoneleigh</i>
<b>Wednesday</b>	Stoneleigh via Bubbenhall to <i>Ryton-on-Dunsmore</i>
<b>Thursday</b>	Ryton-on-Dunsmore via Wolston to <i>Brinklow</i>
<b>Friday</b>	Brinklow to <i>Ansty</i>
<b>Saturday</b>	Ansty via Bedworth to <i>Fillongley</i>
<b>Sunday</b>	Fillongley via Allesley to the <i>Cathedral</i>

## Weekend Event

<b>Friday</b>	Meriden via Berkswell to <i>Kenilworth</i>
<b>Saturday</b>	Kenilworth via Stoneleigh, Bubbenhall, Ryton-on-Dunsmore, Wolston, Brinklow and Ansty to <i>Bedworth</i>
<b>Sunday</b>	Bedworth via Fillongley and Allesley to the <i>Cathedral</i>

We would like to invite you to support and participate in this pilgrimage by:

- Advertising it in your church community
- Considering registering a group – perhaps a youth group – for the weekend challenge
- Nominating a “Pilgrimage Link Person” from your church to liaise with the planning group
- Indicating your interest by joining our mailing list

You will be able to find more information at [www.sherbournetrust.net](http://www.sherbournetrust.net)

With every blessing  
John and Margaret Lloyd  
For the Coventry Pilgrimage 2012 planning group  
1 Hill Top  
Coventry  
CV1 5AB  
[thecoventrypilgrimage@yahoo.co.uk](mailto:thecoventrypilgrimage@yahoo.co.uk)  
Tel: 07938 403290



## **Packington estates newsletter update – November 2011**

In October we unveiled plans to take Packington into the next generation of resource management with the development of an anaerobic digestion facility at our site. Over the course of three days more than 100 people visited our public exhibition at the Coleshill Hotel in Coleshill to view our plans and discuss the development with representatives from SITA UK and the experts we are working with to shape our plans.

### **What are our plans?**

We are proposing to develop a 50,000 tonnes per year Anaerobic Digestion Facility which would service the local area for the treatment of organic waste (such as food and green waste). The plans also include the development of polytunnels, which could use both heat and the compost produced at the facility.

The Anaerobic Digestion facility would be a state-of-the-art enclosed facility and to date we have received positive feedback from local residents about our proposals.

We are looking to submit a planning application for our proposals in December 2011, as local needs require the plant to become operational in 2013. This proposal would enable the previous regional landfill, which is nearing its operational life, to become a more sustainable waste treatment facility which would serve the local area. The facility would generate approximately 1.6 MW of renewable electricity - enough to power approximately 2800 homes.

### **Working with the local community**

We want to keep you up to date with how our plans are progressing. As part of this we are inviting residents to join a Packington community liaison group. The group will meet with SITA UK on a regular basis so we can update members on how our plans for the site are progressing and they can provide any feedback. Members can then go back to their communities and share this information and gather any questions to ask at the next meeting.

The group will provide a voice for the community, to complement the work of elected members and would be independent to, but supported by SITA UK, who would be responsible for any administration.

If you are interested in joining the proposed community liaison group or have any general queries about the proposals please contact Nicola Dowlen using the details below, for information on the number of places and the process for joining.

**Nicola Dowlen**

**Telephone:01628 513217**

**Email: [nicola.dowlen@sita.co.uk](mailto:nicola.dowlen@sita.co.uk)**



### Who we are:

SITA Trust is an ethical funding organisation dedicated to making lasting improvements to the natural environment and community life. The Trust is a not-for-profit company, a registered and accredited environmental body that operates under the Landfill Communities Fund, distributing funds donated by the recycling and resource management company SITA UK. Since beginning its funding programmes, SITA Trust has supported more than 2900 projects to a combined value of more than £78m.

### What we fund:

We support community improvement and young persons volunteering projects in 90 funding zones around qualifying waste processing sites operated by the recycling and resource management company, SITA UK. We also support biodiversity conservation projects throughout England.

### Who can apply:

Not-for-profit organisations including community groups, councils and charities.

### How to apply:

You can apply online to any of SITA Trust's funding programmes. Online application forms and downloadable application guides are available on our website [www.sitatrust.org.uk](http://www.sitatrust.org.uk)

## Enhancing Communities

This programme funds improvements to community facilities and historic buildings. The aim is to enhance community life by supporting facilities which are accessible to all.

There are three strands to the Enhancing Communities Programme:

### Core Fund

Grants of up to £50,000, available to not-for-profit organisations whose community improvement project has an overall cost of no more than £250,000. There are 3 funding rounds per year for this fund.

Grants are available in England, Scotland and Wales in 90 funding zones surrounding qualifying SITA UK waste processing facilities. Potential applicants can see if their project site falls within a funding zone by inserting the site postcode into the postcode checker at [www.sitatrust.org.uk/postcode-checker](http://www.sitatrust.org.uk/postcode-checker)

## Fast Track Fund

Grants of up to £10,000, available to not-for-profit organisations whose community improvement project has an overall cost of no more than £20,000. There are 6 funding rounds per year and you will find out whether your application has been successful within 8 weeks of the application deadline. Grants are available in England, Scotland and Wales in 90 funding zones surrounding qualifying SITA UK waste processing facilities. Potential applicants can see if their project site falls within a funding zone by inserting the site postcode into the postcode checker at [www.sitatrust.org.uk/postcode-checker](http://www.sitatrust.org.uk/postcode-checker)

## Young Persons Volunteering Fund

Grants of up to £10,000 to enable groups of young people aged 14-25 to volunteer their time to improve community facilities or green spaces. You must demonstrate the involvement of young people in both project design and implementation. Grants are available for projects throughout England and Wales. Visit [www.sitatrust.org.uk/volunteering](http://www.sitatrust.org.uk/volunteering) for more info.

## Enriching Nature

An England wide scheme providing funding to projects that benefit a species or habitat identified in the Biodiversity Action Planning Process. Applicants can request up to £120,000. Please talk to your regional biodiversity co-ordinator in the first instance and then contact us on 01454 262910 to discuss your project or visit [www.sitatrust.org.uk/nature-funding](http://www.sitatrust.org.uk/nature-funding) for an online application form and guidance notes.

## QEII Fields Fund

SITA Trust has joined forces with HRH Prince William and the Fields in Trust to support the Queen Elizabeth II Fields Challenge.

2012 marks Her Majesty The Queen's Diamond Jubilee and we want to ensure that it is celebrated in fitting style. The Queen Elizabeth II Fields Challenge is a fantastic new campaign to protect 2012 outdoor recreational spaces in communities all across the country as a permanent living legacy of this great event. Once an area has been designated a Queen Elizabeth II Field an application can be made to SITA Trust's £1 million fund for improvements to the recreation area.

There are two strands to the fund:

- The QEII Fields Volunteer Support Fund will award up to a maximum of £5,000 for projects where it can be demonstrated that volunteers will be extensively involved in the delivery of a project.
- The QEII Major Works Fund will award up to a maximum of £25,000 for projects that also focus on delivery by volunteers, but will allow major works to be carried out by contractors.

We anticipate this fund to open in mid 2011 once fields have been designated.

To find out more about how you can get involved in the Queen Elizabeth II Fields Challenge visit [www.qe2fields.com](http://www.qe2fields.com)